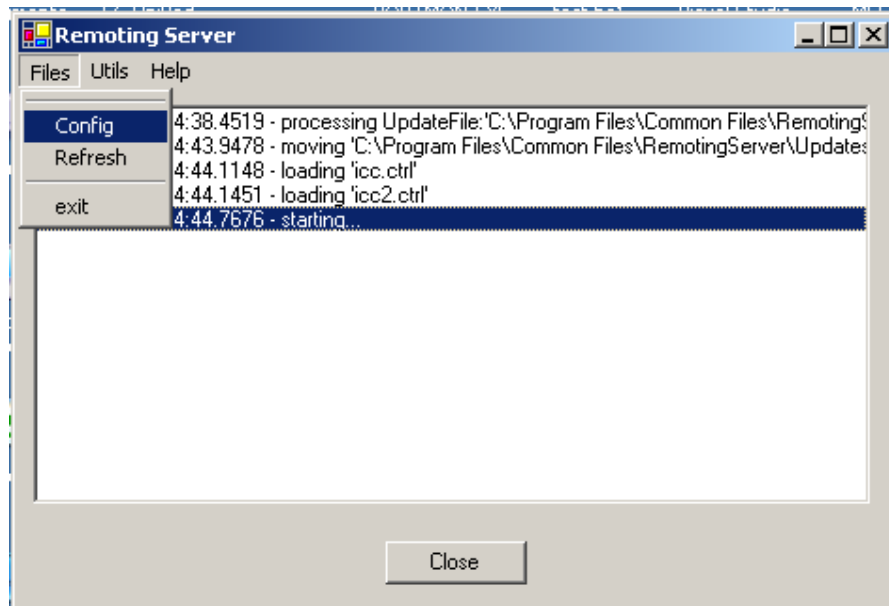


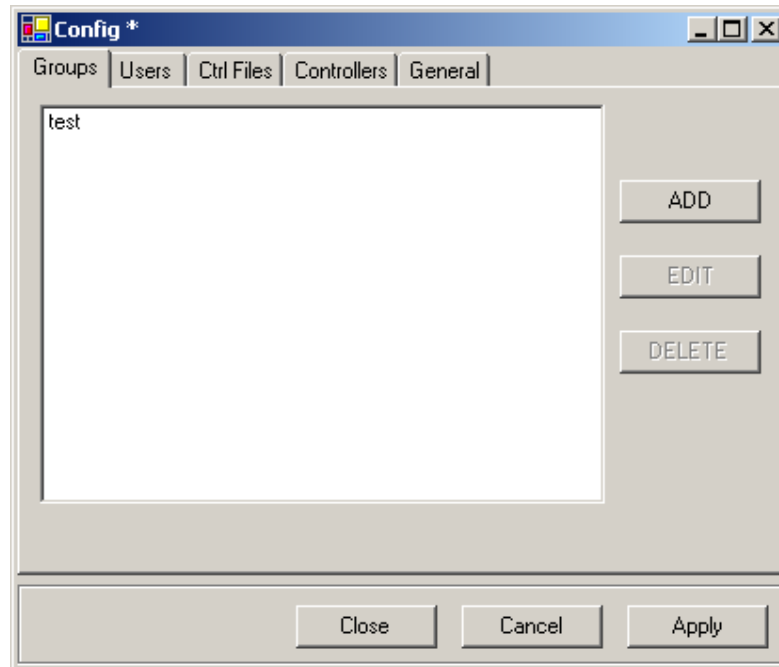
## RemotingServer Setup

1. select **Config** in **Files** menu:

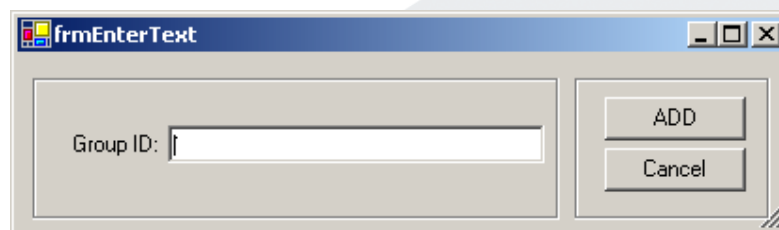


2. Add a Group:

- a. select the **Groups** tab:

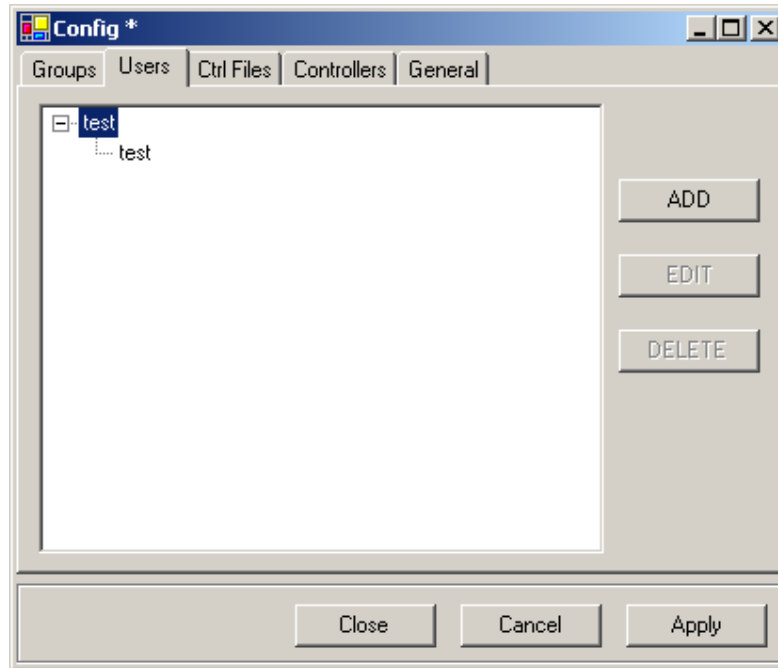


- b. Press the **ADD** button:

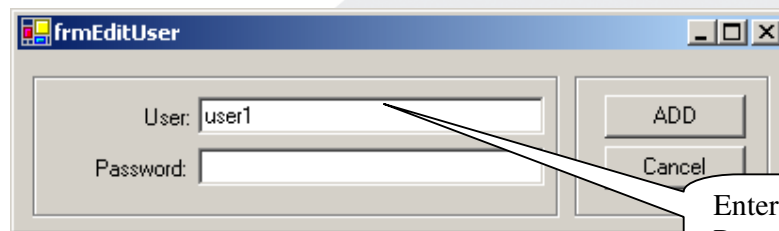


- c. Enter Group name (alphanumeric only, NO spaces are allowed)
- d. Press the **ADD** button to add the Group.

3. Add a User:
  - a. Select the **Users** tab:
  - b. Select the Group:

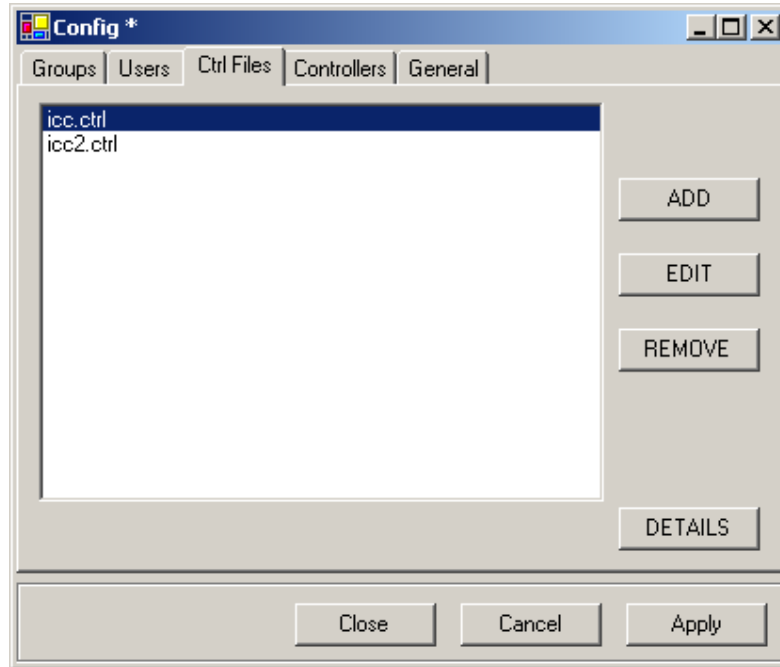


- c. Press the **ADD** button:

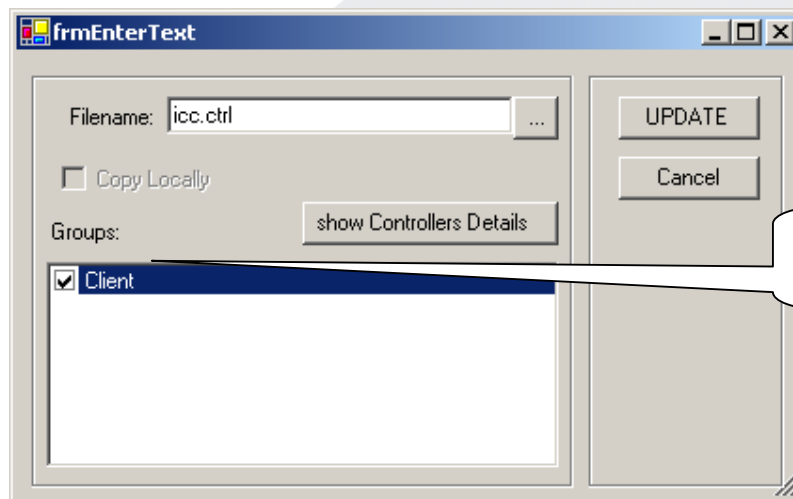


- d. Press the **ADD** button to add the User.

4. Add a controller-definition file:
  - a. Select the **Ctrl Files** tab:



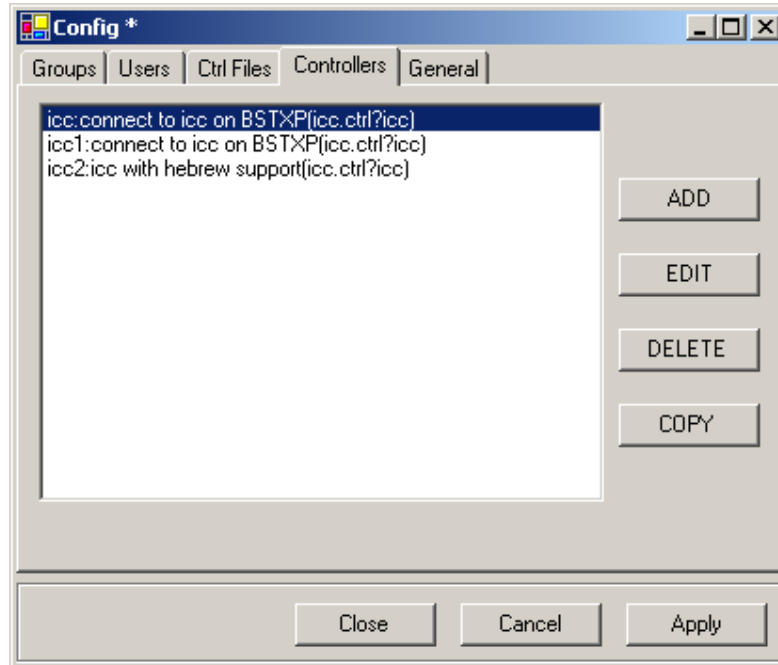
- b. Select the '**icc.ctrl**' file
  - c. Press the **EDIT** button.



- d. Press the **UPDATE** button.

5. Add Controllers:

- a. Select the **Controllers** tab:



b. Press the **ADD** button:

The screenshot shows the 'frmControllerInfo' dialog box. The 'Controller Class' is set to 'icc.ctrl?icc', 'Controller ID' is 'Controller1', and 'Description' is 'Irinet Controller'. The 'Connection Type' is 'OLEDB'. The 'DBase' field contains '\maindata.dbc' and the 'Provider' is 'VFPOLEDB.1'. The 'Groups' section has 'Client' checked. Callouts point to the 'OLEDB' dropdown, the 'DBase' field, and the 'VFPOLEDB.1' provider.

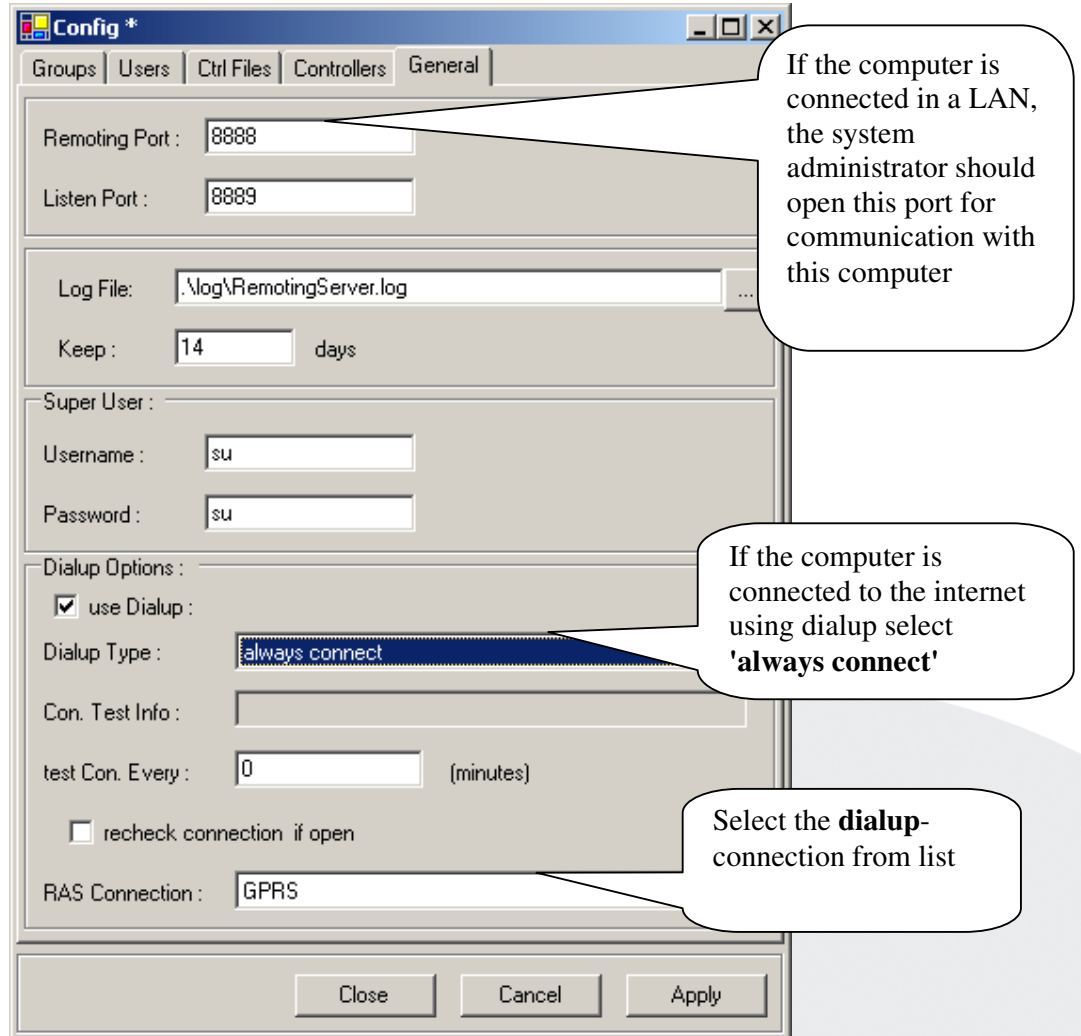
| Misc             |               |
|------------------|---------------|
| LogFile          |               |
| LogFile          |               |
| Connection Type: | OLEDB         |
| Misc             |               |
| DBase            | \maindata.dbc |
| ExtraAttributes  |               |
| Provider         | VFPOLEDB.1    |
| DBase            |               |

Update Cancel

c. Press the **UPDATE** button

6. Communication settings:

- a. select the **General** tab:



The screenshot shows the 'Config' dialog box with the 'General' tab selected. The settings are as follows:

- Remoting Port: 8888
- Listen Port: 8889
- Log File: .\log\RemotingServer.log
- Keep: 14 days
- Super User:
  - Username: su
  - Password: su
- Dialup Options:
  - use Dialup:
  - Dialup Type: always connect
  - Con. Test Info: (empty)
  - test Con. Every: 0 (minutes)
  - recheck connection if open
  - RAS Connection: GPRS

Callouts provide the following instructions:

- For the Remoting and Listen ports: "If the computer is connected in a LAN, the system administrator should open this port for communication with this computer"
- For the Dialup Type: "If the computer is connected to the internet using dialup select 'always connect'"
- For the RAS Connection: "Select the **dialup**-connection from list"

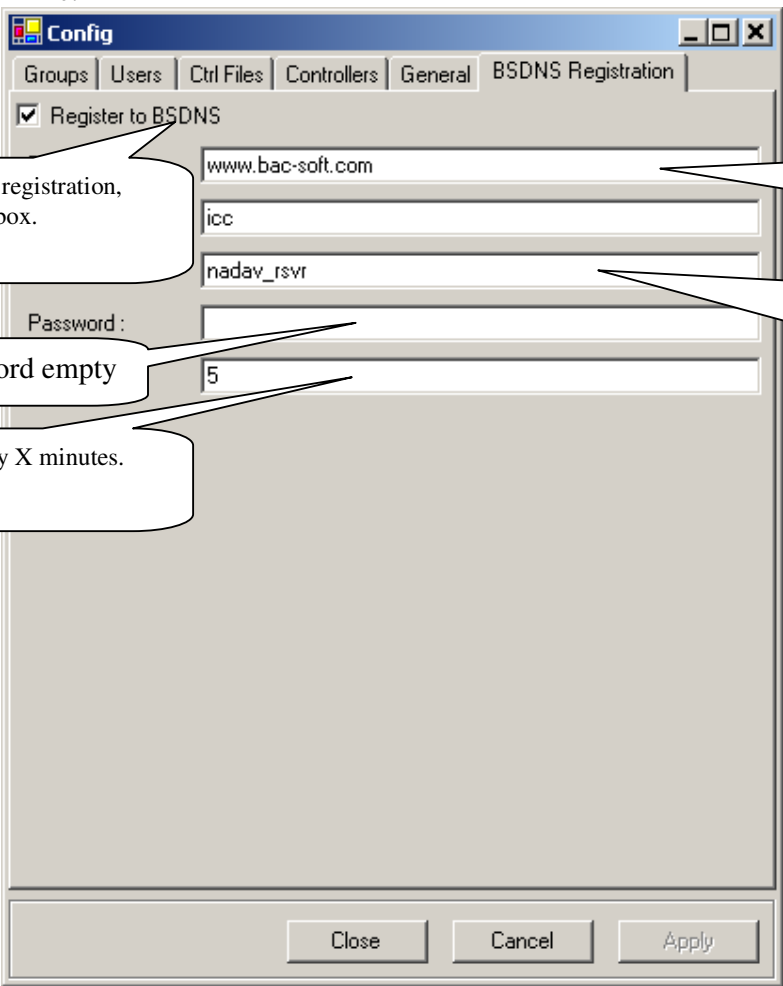
Buttons at the bottom: Close, Cancel, Apply

7. **BSDNS Registration** - settings:

BSDNS registration is used for two purposes:

- a. If the client computer is connected using a **dialup** connection and does not have a static IP address, then BSDNS registration allows the server to find what the current IP of the client computer is.
- b. The registration also allows checking if there is communications between the client computer and the **BacSoft Server** (and that the RemotingServer application is still running).

c.



To use BSDNS registration, mark the checkbox.

Leave password empty

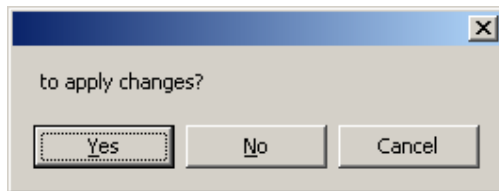
Register every X minutes.

The URL of the BSDNS server (212.199.160.161 if connecting using BacSoft APN)

The ID of the client computer. This ID should be created on the BSDNS server (the same way as the login for the WEB/WAP)

d

8. Press the **Close** button to close Config form.
  - a. Press **Yes** to save and apply the settings.



### Downloading and manually installing IRRiPhone System:

The FTP site Address is: <ftp://bacsoft2:icc45@62.128.50.83>

Sub Directory: **new version/setup**

The requested files are:

1. [dotnetfx.exe](#) –23MB dotnet 1.1 framework ( can also be downloaded from <http://www.microsoft.com/downloads/details.aspx?FamilyId=262D25E3-F589-4842-8157-034D1E7CF3A3&displaylang=en>)
2. [vfpoledb.exe](#) – drivers for visual foxpro.
3. **RemotingServer-Setup-<version>.msi** – server program
4. **ICC-CtrlDef-<version>.msi** – definitions for the irrinet controller

<version> is a version number in format <major>.<minor>.<patch>.

you need to download and install the files with the biggest version number (i.e. please note version 1.12.0> version 1.2.0 )

To install the files **double click** them.

**Please continue in the next page**

### Upgrading Procedures:

1. **Uninstall** the OLD version (via Control Panel\Add/Remove programs)
2. **Install** the NEW version.
  - If upgrading just ONE of these files, i.e. you need to upgrade the server program but the **ICC-CtrlDef** file is up-to-date (the installed version is the same as the latest version in the FTP site) you do NOT need to uninstall & reinstall the up-to-date files.
  - If you only update the ICC-CtrlDef files then you don't need to stop the RemotingServer.  
After the updated ICC-CtrlDef file is installed click on the Refresh menu entry in the Files menu to load the updated definitions into the RemotingServer.